

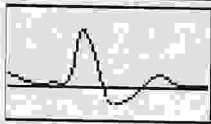


Reason Claudication

Outcome Aneurysm, disease mild, disease moderate, Occlusion, Calcified, Stenosis Moderate

Right

130 1.00



Good



Good



Good



Good



Good

124

0.95

Brachial

Common Femoral

Good

High Thigh

Low Thigh

Popliteal

Good

High Calf

Peroneal

Good

Anterior Tibial

Slightly Reduced

Posterior Tibial

Good

128

0.98

Dorsalis Pedis

Toe Pressure

Foot Flex

122

0.94

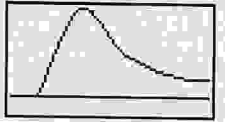
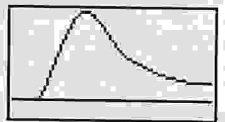
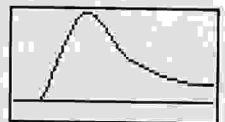
Post Exercise

Foot Flex

120

0.92

Left



Notes

BILATERAL LOWER LIMB ARTERIAL DUPLEX SCAN

AORTA - The abdominal aorta appears aneurysmal, see attached AAA report for details. Mild disease, good triphasic waveforms and PSV 69cm/s.

RIGHT

CIA - Mild disease, good bi/triphasic waveforms and PSV 85cm/s.

EIA - Mild and calcified disease, good triphasic waveforms and PSV 251cm/s.

Assessed by Rae Larmour

Printed on 20/06/2022 at 3:59 pm

Checked by



CFA - Mild/moderate and calcified disease, good triphasic waveforms and PSV 141cm/s.
PFA (origin) - Patent with turbulent triphasic waveforms and PSV 129cm/s.
SFA - Patent along length and through adductor canal with diffuse mild and calcified disease. Good triphasic waveforms and PSV 118-96cm/s.
POPA - Patent with mild and calcified disease, good bi/triphasic waveforms and PSV 102-64cm/s.
TPT - Patent with mild and calcified disease, evidence of 3 VRO.
ATA - Patent along length with mild and calcified disease, good hyperaemic monophasic/triphasic waveforms at the ankle, PSV 93cm/s.
PTA - Patent along length with mild and calcified disease, good hyperaemic monophasic/triphasic waveforms at the ankle, PSV 84cm/s.
PerA - Patent at the ankle with good biphasic waveforms and PSV 44cm/s.

LEFT

CIA - Moderate and calcified disease, good biphasic waveforms and PSV 85-209cm/s.
EIA - Moderate and calcified disease, good mono/triphasic waveforms and PSV 124cm/s.
CFA - Moderate disease, good mono/triphasic waveforms and PSV 159cm/s.
PFA (origin) - Patent with mild and calcified disease, turbulent triphasic waveforms and PSV 119cm/s.
SFA - Patent along length and through adductor canal with diffuse mild and calcified disease, becoming moderate and calcified distally. Good monophasic waveforms and PSV 138-132cm/s. Moderate stenosis at ~51cm for ~1.4cm with PSV increasing from 102cm/s to 307cm/s.
POPA - Patent with mild and calcified disease, good monophasic waveforms and PSV 98-83cm/s.
TPT - Patent with mild/moderate and calcified disease, evidence of 3 VRO.
ATA - Patent proximally with good biphasic waveforms and PSV 55cm/s. Vessel occludes at ~11cm with flow reforming at the ankle, slightly reduced monophasic waveforms and PSV 35cm/s.
PTA - Patent along length with mild and calcified disease, good monophasic waveforms and PSV 63-81cm/s.
PerA - Patent at the ankle with good monophasic waveforms and PSV 51cm/s.

ABPI - Bilateral resting ABPI's are within normal limits with no significant reduction following a one minute exercise challenge.

